

SETAGAYA LITERARY MUSEUM Collection Exhibition

Costumes Speak: The Work of Etsuko Yagyu, Movie Costumer Designer

Saturday, October 7, 2023 to Sunday, March 31, 2024

Simultaneous Exhibition: MUTTONI Collection

Etsuko Yagyu (1929-2020) worked on movie costume design in all genres, from modern drama to period drama. This exhibition features many designs donated by the artist during her lifetime, including designs from *Hadaka no Taisho*, *Sir Galahad in Campus*, *Furin Kazan*, and *The Silk Road*, through which we see Etsuko Yagyu's work as a pioneer in the golden age of Japanese cinema.



Costume design from *You Can Succeed, Too* (1964, Toho)

Admission Fees

General admission: ¥200 (160)/College or High School Student: ¥150 (120); Over 65/Junior High and Elementary School Student: ¥100 (80); Disability certificate holders: ¥100 (80) yen (Disability certificate holders of college age and below are admitted free of charge)

*Amounts in parentheses group discounts and reduced rates for holders of the Setagaya Arts Card

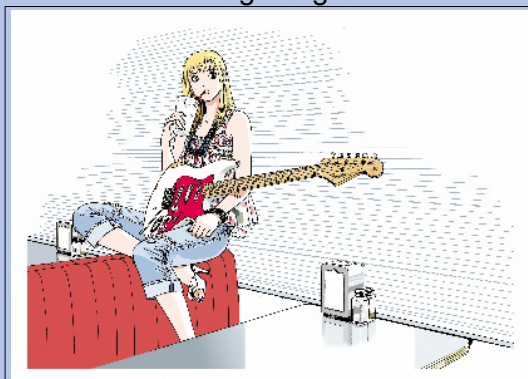
*Residents of Setagaya City and elementary/junior high school students attending school in Setagaya City can enter the collection exhibition free of charge on weekends and holidays.

*If the museum is crowded, you may need to wait to enter.

Special Exhibition: Hisashi Eguchi Exhibition

Saturday, September 30, 2023 to Sunday, February 4, 2024

Hisashi Eguchi (b. 1956) has been an iconic presence in pop culture since the 1980s and continues to influence a wide range of generations today.



Cover art from Hisashi Eguchi's *Stop!! Hibari-kun! Complete Edition 1*, 2009, published by Shogakukan Creative

Admission Fees

General admission: ¥1,000 (800); Over 65/College or High School Student: ¥600 (480); Junior High and Elementary School Student: ¥300 (240); Disability certificate holders: ¥500 (400) yen (Disability certificate holders of college age and below are admitted free of charge)

*Amounts in parentheses group discounts and reduced rates for holders of the Setagaya

Arts Card

*If the museum is crowded, you may need to wait to enter.

Exhibition Tickets

Online tickets and same-day tickets are available.

*For details regarding online tickets, please see the e-tix website (<https://www.e-tix.jp/setabun/en/>).

*We cannot accept phone inquiries.

Visitor Information

Opening Hours

Exhibition rooms: 10:00 am – 6:00 pm (last admission 5:30 pm)

Closures

Every Monday (Closed Tuesday when a national holiday falls on Monday)

In-house maintenance periods and New Year holidays (December 29th – January 3rd)

Setagaya Arts Foundation

SETAGAYA LITERARY MUSEUM

1-10-10 Minamikarasuyama, Setagaya City, Tokyo 152-0062

Tel. 03-5374-9111 <https://www.setabun.or.jp/>